

THIS DRAWING IS UNPUBLISHED. RELEASED FOR PUBLICATION  
 © COPYRIGHT - BY TYCO ELECTRONICS CORPORATION. ALL RIGHTS RESERVED.

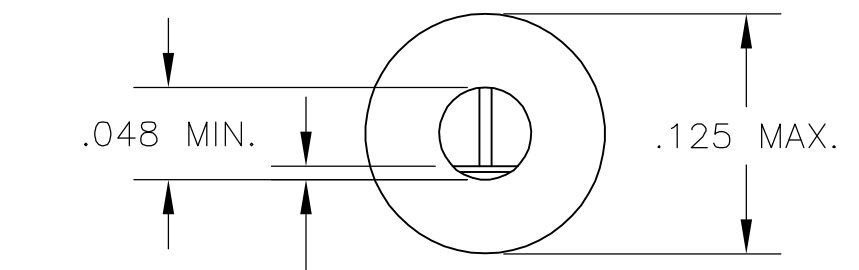
| LOC | DIST | REVISIONS                 |         |     |      |
|-----|------|---------------------------|---------|-----|------|
| P   | LTR  | DESCRIPTION               | DATE    | DWN | APVD |
|     |      | REVISED PER ECO-06-018765 | 13APR07 | DH  | DB   |

1 PART FITS IN TO A #43 DRILLED HOLE (.089±.0015) FOR HAND INSERTION, AND A #44 DRILLED HOLE (.086±.0015) FOR MACHINE INSERTION.

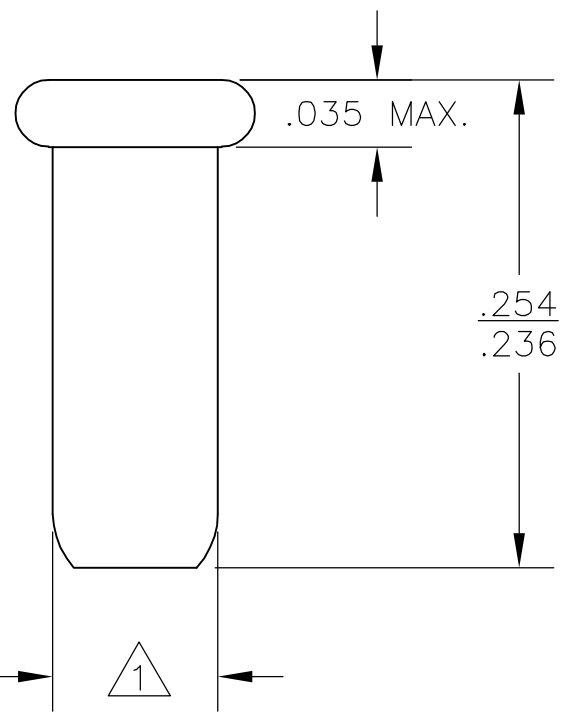
2 .145 MIN INSERTION DEPTH REQUIRED FOR A RELIABLE CONNECTION.

3. SPRING IS SECURED IN CUP WITH NO SPRING ROTATION PERMISSABLE.

4. LEAD RANGES & PERFORMANCE RESULTS:

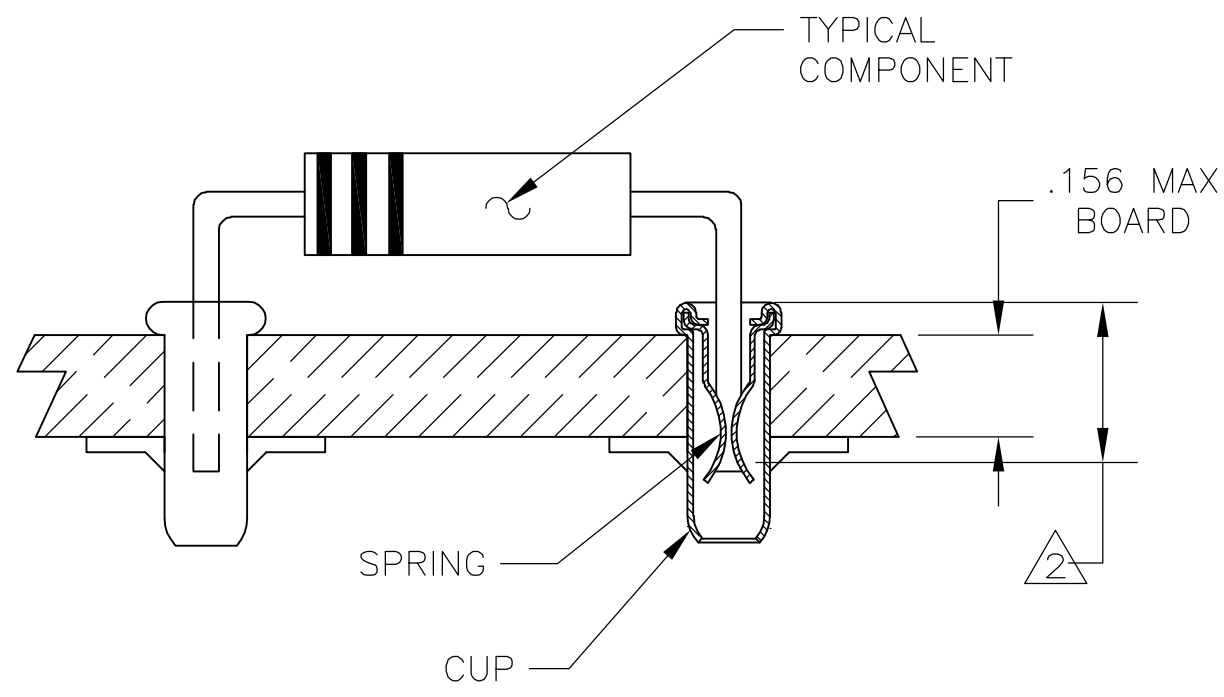


.007 MAX CUT-OFF TAB



| LEAD RANGES (DIA)    | .018-.020 | .025-.032 | .035-.040 |
|----------------------|-----------|-----------|-----------|
| MAX INSERTION FORCE  | 17 OZ     | 37 OZ     | 48 OZ     |
| MIN EXTRACTION FORCE | 1.0 OZ    | 1.5 OZ    | 2.0 OZ    |
| MILLVOLT DROP (MAX)  | 2.00 mV   | 1.75 mV   | 1.50 mV   |

|                   |  |  |          |
|-------------------|--|--|----------|
| OBSOLETE          | TIN-LEAD                               | PRE-TIN                                | 380635-5 |
| SUPSD BY 380635-2 | TIN-LEAD                               | .000050 MIN Au OVER .000050 MIN NICKEL | 380635-4 |
| OBSOLETE          | .000050 MIN Au OVER .000050 MIN NICKEL | .000050 MIN NICKEL                     | 380635-3 |
| OBSOLETE          | TIN-LEAD                               | .000030 MIN Au OVER .000030 MIN NICKEL | 380635-2 |
|                   | .000030 MIN Au OVER .000030 MIN NICKEL | .000030 MIN NICKEL                     | 380635-1 |
|                   | CUP                                    | SPRING                                 | PART NO. |
| FINISH            |  |  |          |



|  |  |                         |   |  |
|--|--|-------------------------|---|--|
| THIS DRAWING IS A CONTROLLED DOCUMENT. |  | DWN D.HUMBERT 07FEB2007 | Tyco Electronics Corporation<br>Harrisburg, PA 17105-3608 |  |
| DIMENSIONS: INCHES                     | TOLERANCES UNLESS OTHERWISE SPECIFIED: | CHK J.HAVENER           | REUSABLE COMPONENT RECEPTACLE                             |  |
|  | 0 PLC ± -                              | APVD J.HAVENER          | NAME  |  |
|  | 1 PLC ± -                              | PRODUCT SPEC            | SIZE CAGE CODE DRAWING NO RESTRICTED TO                   |  |
|  | 2 PLC ± -                              | APPLICATION SPEC        | A3 00779 C-380635   |  |
|  | 3 PLC ± -                              | FINISH SEE TABLE        | SCALE NTS SHEET 1 OF 1 REV W2                             |  |
| MATERIAL CUP - COPPER SPRING - Be-Cu   |  | WEIGHT -                |   |  |